

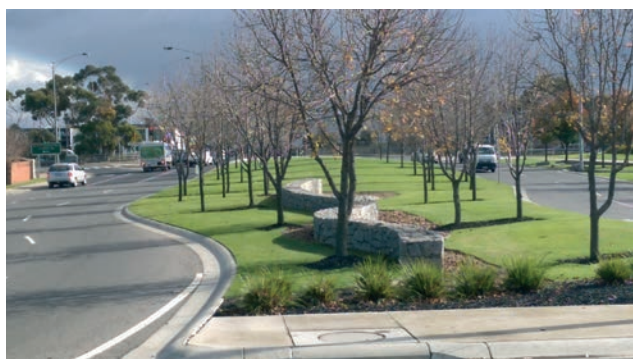
# Turf Specification Guide



[www.villagegreenturf.com.au](http://www.villagegreenturf.com.au)



## Why you should choose Village Green premium kikuyu



Essendon Fields Melbourne



Village Green premium kikuyu's massive root system



Village Green premium kikuyu (left) versus couch (right) in winter

### Versatility

Village Green can be maintained at a wide range of mowing heights and has a dense growth habit which makes it one of the most versatile turf grasses available in Australia.

Village Green not only looks good all year round it can also tolerate heavy wear, cold, heat and neglect.

Village Green is versatile and can be specified across a broad range of uses, including:

- Sports fields – all types of sports and levels of competition.
- Public open spaces – ideally suited to high profile high use sites, playgrounds or passive areas.
- Entry statements – makes a great green entrance.
- Golf tees and fairways – presents an ideal dense tight green surface.
- Home lawns – great for high use sunny areas.

### Proven performance

- Village Green has proved to be a reliable performer across varying climatic conditions and uses.
- Village Green has a dense/vigorous growth habit that gives it the ability to resist and recover quickly from wear all year round.
- Village Green tolerates cold conditions, staying green during the winter in most locations across Australia.
- When compared to common kikuyu Village Green has a much shorter internode length. This feature means it can produce more shoots and roots, giving it a greater ability to create a dense fine cover that crowds out weeds even in dry conditions.

### Climate and soil

- Village Green grows across a wide variety of soil types and climatic zones. However Village Green is not suited to the tropics and is best grown below a line from Noosa in Queensland to Carnarvon in Western Australia.
- It is moderately tolerant of salt, both in irrigation water and the soil.
- It tolerates intermittent waterlogging.
- Village Green has good cold tolerance compared to other warm season grasses and stays a dark green colour during winter. Temporary leaf damage can occur in frost prone areas.





Village Green premium kikuyu tolerates dappled light



Village Green premium kikuyu low mown

## Shade

- Village Green prefers full sun and is only moderately shade tolerant, however it can tolerate dappled light under trees and partially shaded areas so long as it receives four or more hours of total sunlight per day.

## Appearance

- Village Green has a medium texture with a vibrant emerald green leaf. This is particularly evident during the cooler months when compared to other warm season grasses.
- Village Green can be transformed into a fine texture with regular low mowing.

## Maintenance

- Village Green can maintain good density even with low levels of fertiliser. However it responds well to nitrogen fertiliser all year round.
- Even with minimal maintenance Village Green will create a dense cover that crowds out weeds thus reducing the need for herbicides.
- To gain the full benefits from growing Village Green it is best kept mown low all year round (heights ranging from 9 – 25 mm for most sports).



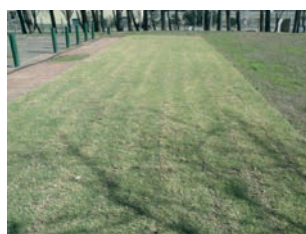
Meadow Springs Mandurah



# Important criteria when specifying Village Green premium kikuyu



Newly laid



Three weeks later

Village Green premium kikuyu tested at Exhibition Park Canberra during July. Three weeks later after subzero temperatures it still has a green cover and well established roots.



Village Green premium kikuyu slabs



Village Green premium kikuyu (bottom) versus common kikuyu (top) stolons

## Turf grass species

- When specifying Village Green, ensure the turf supplied consists of kikuyu grass sod (*Pennisetum clandestinum*) of the Village Green variety (PBR No. 3566). In Victoria Village Green suppliers may market Village Green under the name 'Eureka Premium VG' however an authenticity certificate should be supplied.
- Do not accept kikuyu grass that is contaminated with couch grass (*Cynodon dactylon*) or any other turf grass species or weed.
- Source turf from a licensed Village Green turf grower.
- Make sure a certificate of authenticity is supplied with every individual job.

## Planting time

- Village Green can be planted at any time of the year. It is one of the few turf varieties that will establish a strong root system even when planted in winter. This allows grassing projects to be carried out at any time of year.

## Establishment method

- For the best outcome use solid turf.
- If using stolons or line planting be aware of extra weed control, watering and fertilising, as well as time 'out of play'.
- Always specify the method of establishment. Below are common turf cut sizes and establishment methods:

**Conventional Rolls:** 40 cm x 200 cm long rolls with 5 mm of soil. Weighs approximately 20 kg. Suitable for small to large areas.

**Slabs:** Similar to conventional rolls with the added benefit of being slightly smaller and easier to handle.

**Big (Maxi) Rolls:** 100 cm x 10,000 cm long with 20 mm of soil. Weighs approximately 200 kg. Good for large areas.

**Line planting:** Sod is cut into thin strips and planted in long lines.

**Stolons:** Sod is shredded, broadcast and then incorporated into the soil. Installation is easy and inexpensive but requires time and inputs to grow in. Suited to low cost sites where time is not critical. Only suited for establishment between October – February.





Quality Village Green premium kikuyu



Triplex finishing mower provides a quality finish

## Turf quality

- When taking delivery of solid turf check that there is sufficient strength in the rolls/slabs to hold together during standard practice handling and laying.
- To give a uniform appearance after installation, Village Green rolls/slabs must be consistent and high quality. When rolls are laid side by side they must be of a uniform colour, soil thickness and with a quality finish.
- The turf should be mowed with a mower with a bench setting of 20 – 25 mm one day prior to harvest.
- The rolls of turf grass are to be delivered in a moist state and not damaged from drying out prior to delivery.
- The turf grass shall be free of any visual presence of weeds, pests and diseases.
- For turf being laid onto sand based profiles, the soil type of the soil portion of the slab should be classified as sand with 95% of the sand particles being in the size range of 0.05 – 2.00 mm.
- Washed turf is often recommended for sand based profiles. This is to maintain good drainage and reduce transfer of nematodes. Washed turf is to be free of any soil.

## Sourcing Village Green premium kikuyu

Source Village Green from a licensed grower and always obtain a certificate of authenticity. If feasible it is recommended to conduct an onsite inspection of the turf to ensure the quality of the turf.

For a list of local suppliers please go to [www.villagegreenturf.com.au](http://www.villagegreenturf.com.au)



Harvesting Village Green premium kikuyu



## Preparing the site and laying Village Green premium kikuyu



Levelling surface



Laying Village Green premium kikuyu standard rolls

### Soil profile preparation

- For preparation of sports fields and high profile public open spaces consult with a turf consultant.
- Start preparations by removing all rocks and debris, eradicate and physically remove all vegetation and weeds (dead or alive) from the site.
- Consolidate the subgrade and establish levels.
- Install subsurface agricultural drainage if the original soil substrate has a drainage rate less than 10 mm/hr.
- As a general guide, for high profile sites import a medium textured sand profile that has minimum depth of 150 mm but preferably 250 – 300 mm.
- The imported sand or sand onsite should be made up of more than 60% medium sized sand with granules measuring between 0.25 – 0.50 mm. The balance is made up of fine sand (granules between 0.1 – 0.25 mm) and coarse sand (0.5 – 1.0 mm granules).
- Install the irrigation system and ensure that the system has a high uniformity.
- Incorporate soil amendment at 10% coco peat or similar by volume down to 100 mm and mix using a rotary hoe. Apply gypsum, lime and fertiliser as recommended by a turf consultant.
- Level and smooth the soil, roll the area lightly with a roller, leaving the grade 100 mm below finish grade.
- Water the prepared area to a depth of 15 cm to settle soil and provide a moist base for turf.



Laying Village Green premium kikuyu large rolls





Well laid job



Poorly laid job

## Laying Village Green premium kikuyu

- Check irrigation on the site is fully functional.
- Turf should be planted within two days of harvesting. If delays occur protect unlaid turf by placing it in the shade and covering it with moist hessian.
- When laying stagger joins in a brick like fashion. Lay turf without stretching, gaps, air pockets, indentations or overlapping and avoid leaving small strips at outer edges as they will not retain moisture.
- The delivery of turf to the laying 'face' shall be over the unlaid area; vehicles are not permitted to be driven over the laid turf.
- The installer shall also ensure that levels are not disturbed during the laying process.
- After installing the turf, roll the entire area to improve turf-to-soil contact and remove air pockets.
- Begin establishment watering within 30 minutes of installation of each large section.
- Do not let the top 100 mm of the soil profile dry out, that may mean watering more than once per day during hot periods.



Hands Oval Bunbury

## Village Green premium kikuyu at a glance

Features and Benefits	
<b>Versatile</b>	Village Green is versatile and can be specified for sports fields, public open spaces, entry statements, golf tees and fairways, racecourses and home lawns.
<b>Performs all year round</b>	Due to its dense/vigorous growth habit and cold tolerance, Village Green performs all year round, particularly during winter when it stays greener for longer compared to other warm season grasses.
<b>Dense cover</b>	Village Green has more shoots and roots due its short internode length when compared to common kikuyu giving it a greater ability to create a dense fine cover that crowds out weeds and tolerates heat, poor water quality, heavy foot traffic and drought.
<b>Full sun</b>	Village Green prefers full sun and is not shade tolerant, but can tolerate dappled light under trees so long as it receives four or more hours of total sunlight per day.
<b>Looks good</b>	Village Green has a medium texture with a vibrant emerald green leaf. This is particularly evident during the cooler months when compared to other warm season grasses.
<b>Install anytime</b>	Village Green can be planted at any time of the year. It is one of the few turf varieties that established a strong root system even when planted in winter. This allows grassing projects to be completed at any time of year.

## Specifying Village Green premium kikuyu

Specification	
<b>Specific name</b>	When specifying Village Green, ensure the turf supplied consists of kikuyu grass sod ( <i>Pennisetum clandestinum</i> ) of the Village Green variety (PBR No. 3566). In Victoria it is also marketed under the name 'Eureka Premium VG'.
<b>Uncontaminated</b>	Do not accept kikuyu grass that is contaminated with couch grass ( <i>Cynodon dactylon</i> ) or any other turf grass species.
<b>Licensed grower</b>	Source turf from a licensed Village Green turf grower.
<b>Certificate of authenticity</b>	Make sure a certificate of authenticity is supplied with every individual job.
<b>Solid turf</b>	For the best outcome use solid turf. If using stolons or line planting be aware of extra weed control, watering and fertilising, as well as time 'out of play'.
<b>Quality turf</b>	The turf is to be delivered fresh (no damage from drying out), free of any visual presence of weeds, pests and diseases and there is sufficient strength in the rolls/slabs to hold together during standard practice handling and laying.

For more information please visit: [www.villagegreenturf.com.au](http://www.villagegreenturf.com.au)